

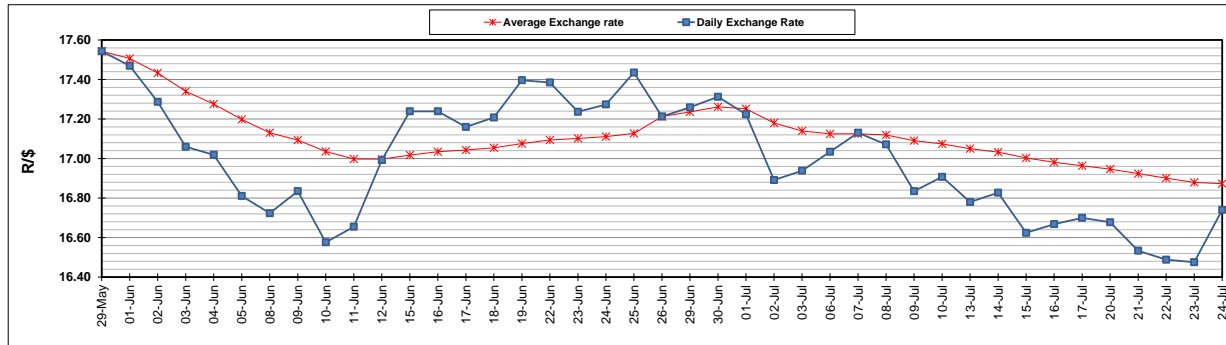
	PETROL 95 ULP	PETROL 93 ULP & LRP	DIESEL 0.05%	DIESEL 0.005%	ILL. PAR.
GAUTENG PUMP PRICE (SA c/l) AS FROM 01/07/2020	1,512.000	1,483.000	-	-	-
WHOLESALE PRICE (SA c/l) AS FROM 01/07/2020	-	-	1,303.560	1,307.960	703.828
SINGLE NATIONAL MAXIMUM RETAIL PRICE	-	-	-	-	882.000
BASIC FUEL PRICE - 24/07/2020 (SA c/l)	548.380	536.772	576.577	581.118	515.245
PRESS RELEASE CONTRIBUTION TO BFP 01/07/2020 - 24/07/2020 (SA c/l)	564.770	545.770	552.630	557.030	499.128
UNIT OVER/(UNDER) RECOVERY - 24/07/2020 (SA c/l)	16.390	8.998	(23.947)	(24.088)	(16.117)
AVERAGE BASIC FUEL PRICE 26/06/2020 - 24/07/2020	553.452	539.569	579.403	583.873	514.166
AVERAGE UNIT OVER/(UNDER) RECOVERY 26/06/2020 - 24/07/2020	(13.253)	(17.085)	(51.487)	(50.986)	(45.609)

ANALYSIS MOVEMENT OF AVERAGE OVER/(UNDER) RECOVERY

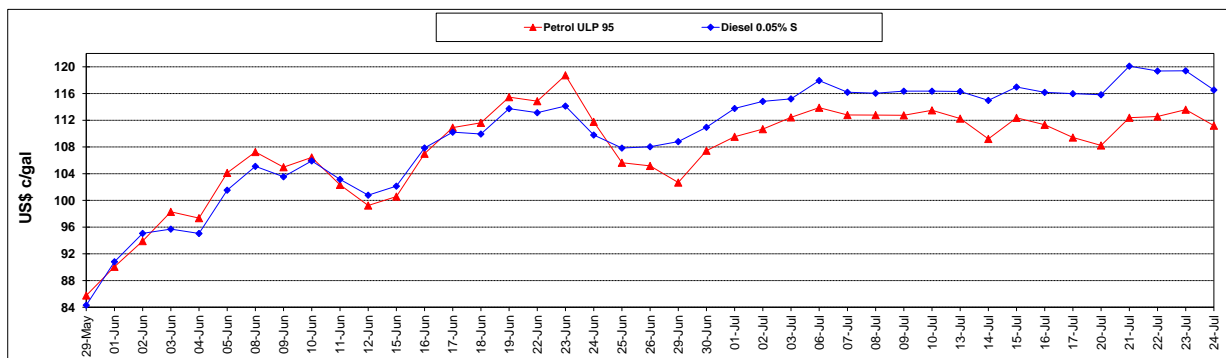
	PETROL 95	PETROL 93	DIESEL 0.05%	DIESEL 0.005%	ILL. PAR.
- MOVEMENT IN INTERNATIONAL PRODUCT PRICES	(21.591)	(25.214)	(60.216)	(59.782)	(53.355)
- MOVEMENT IN EXCHANGE RATE	8.338	8.129	8.729	8.796	7.746
AVERAGE UNIT OVER/(UNDER) RECOVERY 26/06/2020 - 24/07/2020	(13.253)	(17.085)	(51.487)	(50.986)	(45.609)

R/\$ EXCHANGE RATE - (R/\$16.7405 - 24/07/2020)

EXCHANGE RATE USED IN BASIC FUEL PRICE



INTERNATIONAL PRODUCT PRICES OF BASKET USED IN BASIC FUEL PRICE



BASIC FUEL PRICE IN SA CENTS PER LITRE

